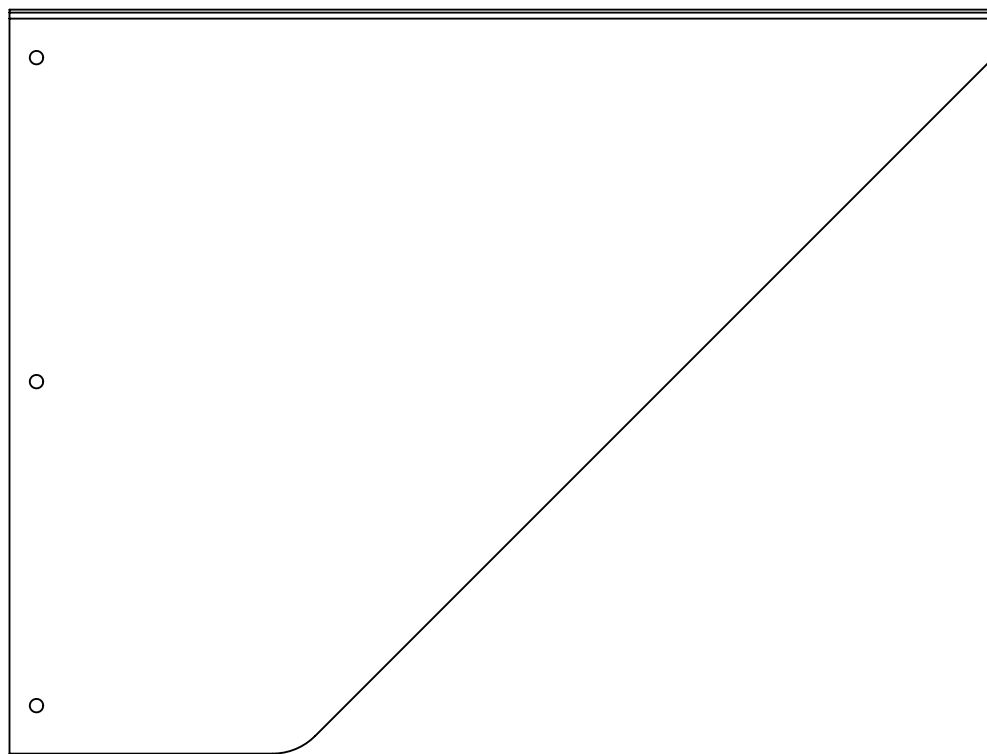


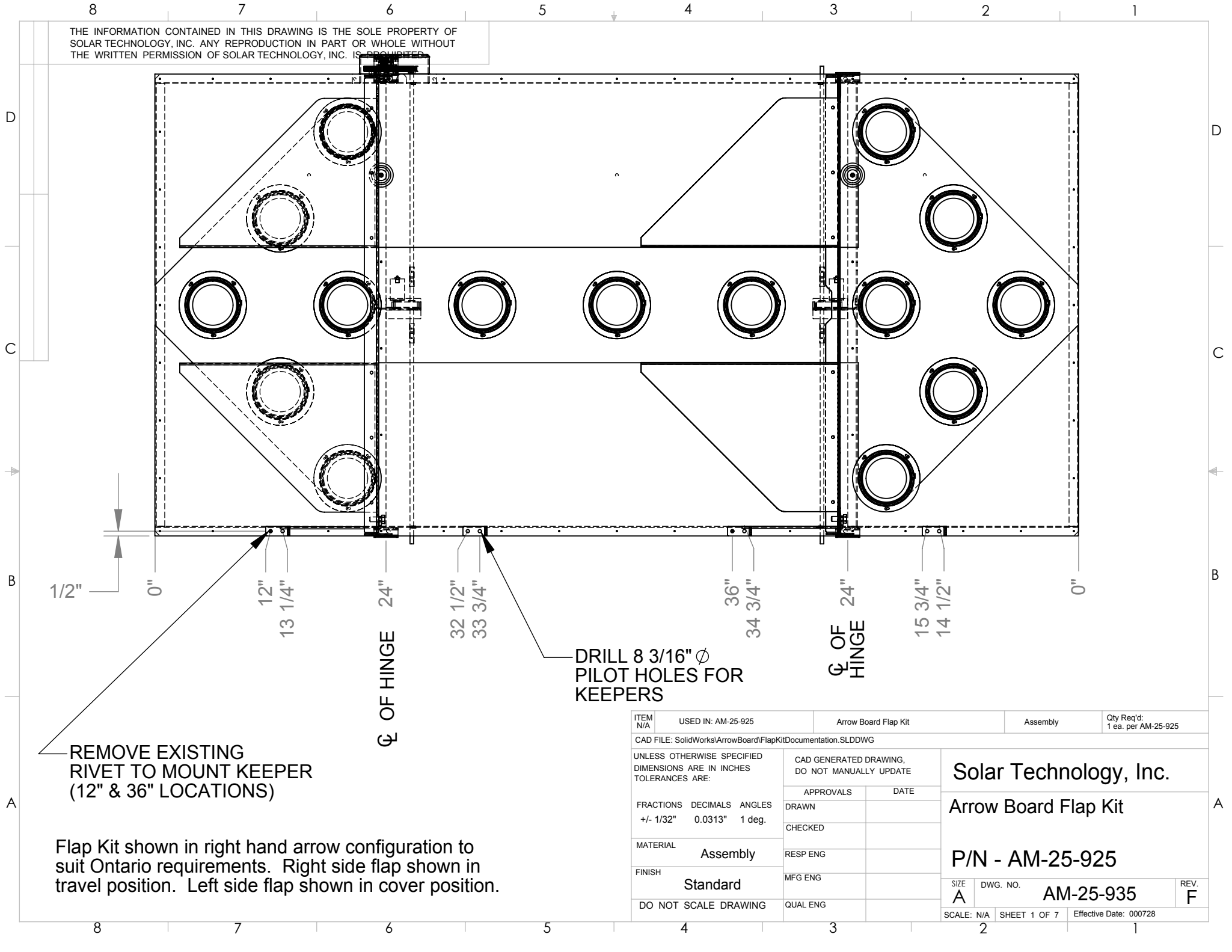
THE INFORMATION CONTAINED IN THIS DRAWING IS THE SOLE PROPERTY OF SOLAR TECHNOLOGY, INC. ANY REPRODUCTION IN PART OR WHOLE WITHOUT THE WRITTEN PERMISSION OF SOLAR TECHNOLOGY, INC. IS PROHIBITED.



Left Hand Flap Shown.
Right Hand Flap Opposite.

ITEM N/A	USED IN: Flap Kit Assembly	Left Hand Flap (Right Hand Opp)	1/8" Thick Aluminum Sheet	Qty Req'd: 2 ea. per Flap Kit (L&R)
CAD FILE: SolidWorks\ArrowBoard\FlapKitDocumentation.SLDDWG				
UNLESS OTHERWISE SPECIFIED DIMENSIONS ARE IN INCHES TOLERANCES ARE:		CAD GENERATED DRAWING, DO NOT MANUALLY UPDATE		Solar Technology, Inc.
FRACTIONS +/- 1/32"	DECIMALS 0.0313"	ANGLES 1 deg.	APPROVALS	
MATERIAL: Aluminum Sheet 1/8" Thick		DRAWN		Left Hand Flap (Right Hand Opp) P/N - 110-825-330 (left) 110-825-332 (right)
FINISH Standard		CHECKED		
DO NOT SCALE DRAWING		RESP ENG		
		MFG ENG		
		QUAL ENG		SIZE A
				DWG. NO. AM-25-935
				REV. F
				SCALE: N/A
				SHEET 4 OF 7
				Effective Date: 000727

THE INFORMATION CONTAINED IN THIS DRAWING IS THE SOLE PROPERTY OF SOLAR TECHNOLOGY, INC. ANY REPRODUCTION IN PART OR WHOLE WITHOUT THE WRITTEN PERMISSION OF SOLAR TECHNOLOGY, INC. IS PROHIBITED.



REMOVE EXISTING RIVET TO MOUNT KEEPER (12" & 36" LOCATIONS)

DRILL 8 3/16" Ø PILOT HOLES FOR KEEPERS

Flap Kit shown in right hand arrow configuration to suit Ontario requirements. Right side flap shown in travel position. Left side flap shown in cover position.

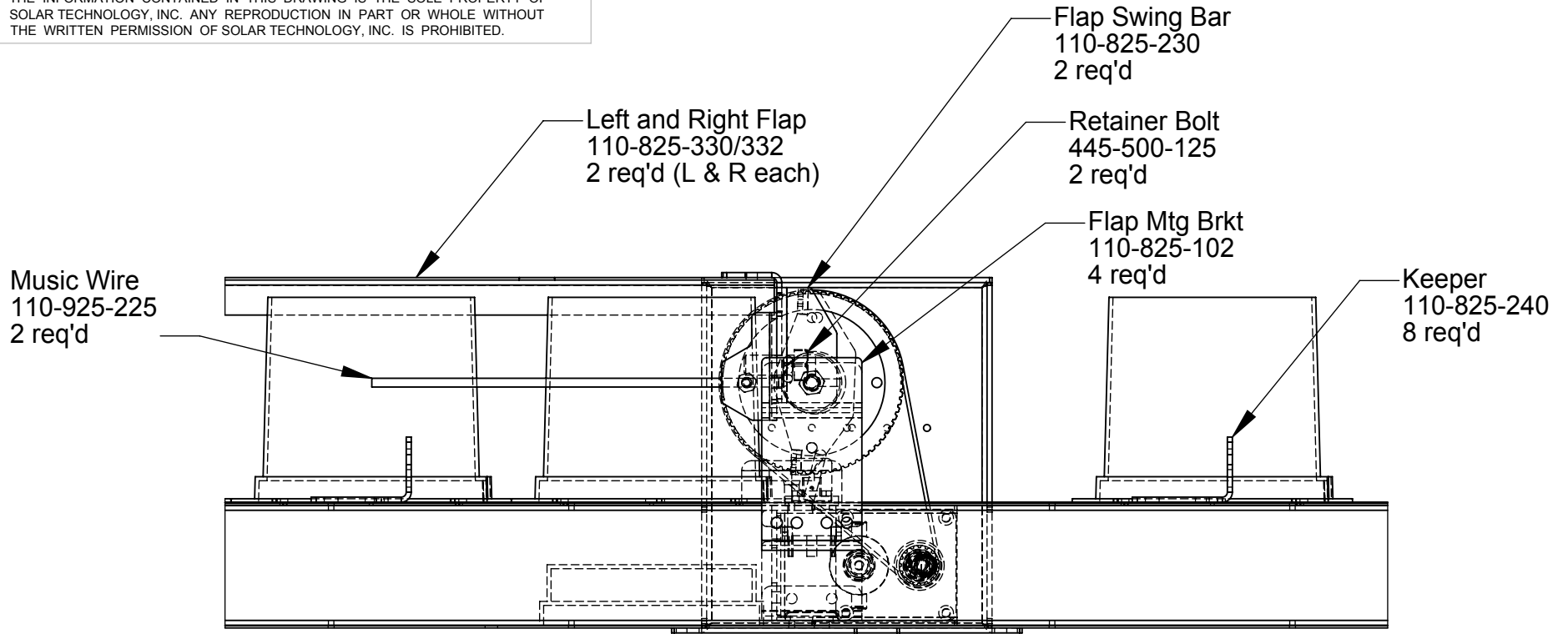
ITEM N/A	USED IN: AM-25-925	Arrow Board Flap Kit	Assembly	Qty Req'd: 1 ea. per AM-25-925
CAD FILE: SolidWorks/ArrowBoard/FlapKit/Documentation.SLDDWG				
UNLESS OTHERWISE SPECIFIED DIMENSIONS ARE IN INCHES TOLERANCES ARE:		CAD GENERATED DRAWING, DO NOT MANUALLY UPDATE		
FRACTIONS	DECIMALS	ANGLES	APPROVALS	DATE
+/- 1/32"	0.0313"	1 deg.	DRAWN	
			CHECKED	
MATERIAL	Assembly		RESP ENG	
FINISH	Standard		MFG ENG	
DO NOT SCALE DRAWING			QUAL ENG	
SIZE A		DWG. NO. AM-25-935		REV. F
SCALE: N/A		SHEET 1 OF 7		Effective Date: 000728

Solar Technology, Inc.

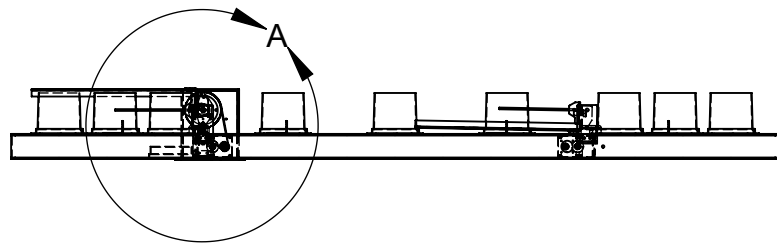
Arrow Board Flap Kit

P/N - AM-25-925

THE INFORMATION CONTAINED IN THIS DRAWING IS THE SOLE PROPERTY OF SOLAR TECHNOLOGY, INC. ANY REPRODUCTION IN PART OR WHOLE WITHOUT THE WRITTEN PERMISSION OF SOLAR TECHNOLOGY, INC. IS PROHIBITED.



DETAIL A
SCALE 1 : 4



Bottom View

ITEM N/A	USED IN: AM-25-925	Arrow Board Flap Kit	Assembly	Qty Req'd: 1 ea. per AM-25-925
CAD FILE: SolidWorks/ArrowBoard/FlapKitDocumentation.SLDDWG				
UNLESS OTHERWISE SPECIFIED DIMENSIONS ARE IN INCHES TOLERANCES ARE:		CAD GENERATED DRAWING, DO NOT MANUALLY UPDATE		Solar Technology, Inc.
FRACTIONS +/- 1/32"	DECIMALS 0.0313"	ANGLES 1 deg.	APPROVALS	
MATERIAL Assembly		DRAWN		Arrow Board Flap Kit
FINISH Standard		CHECKED		
DO NOT SCALE DRAWING		RESP ENG		
		MFG ENG		P/N - AM-25-925
		QUAL ENG		
SIZE A	DWG. NO. AM-25-935	SCALE: N/A	SHEET 2 OF 7	REV. F
Effective Date: 000728				

THE INFORMATION CONTAINED IN THIS DRAWING IS THE SOLE PROPERTY OF SOLAR TECHNOLOGY, INC. ANY REPRODUCTION IN PART OR WHOLE WITHOUT THE WRITTEN PERMISSION OF SOLAR TECHNOLOGY, INC. IS PROHIBITED.

D

D

C

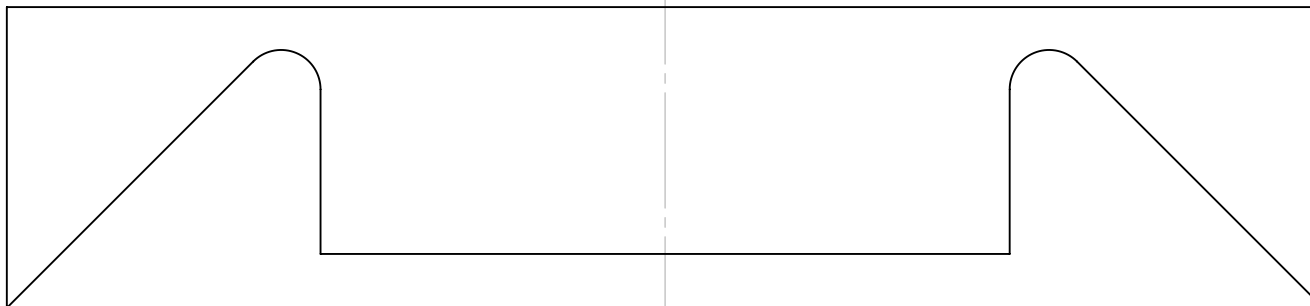
C

B

B

A

A



C OF PANEL
(SYMM.)

ITEM N/A	USED IN: AM-25-925	Reflective Sheeting Skin	512-005-006	Qty Req'd: 2 ea. per AM-25-925
CAD FILE: SolidWorks\ArrowBoard\FlapKit\Documentation.SLDDWG				
UNLESS OTHERWISE SPECIFIED DIMENSIONS ARE IN INCHES TOLERANCES ARE:		CAD GENERATED DRAWING, DO NOT MANUALLY UPDATE		Solar Technology, Inc.
FRACTIONS +/- 1/32"	DECIMALS 0.0313"	ANGLES 1 deg.	APPROVALS	
MATERIAL 512-005-006		DRAWN		Reflective Sheeting Skin
FINISH Standard		CHECKED		
DO NOT SCALE DRAWING		RESP ENG		P/N - N/A
		MFG ENG		
		QUAL ENG		SIZE A
				DWG. NO. AM-25-935
				REV. F
				SCALE: N/A
				SHEET 3 OF 7
				Effective Date: 000728

8

7

6

5

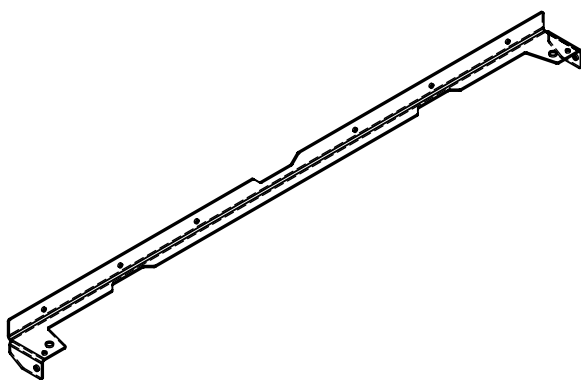
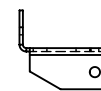
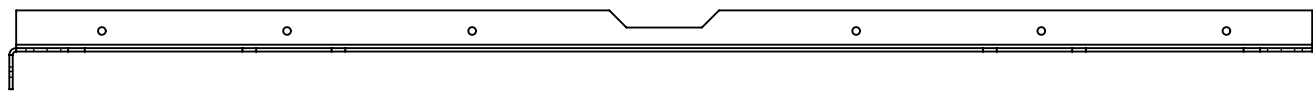
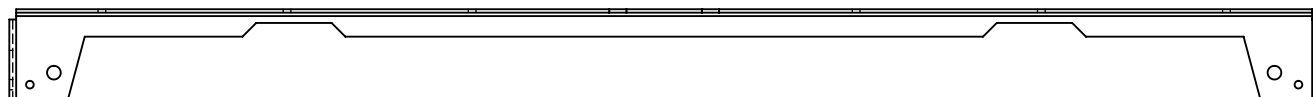
4

3

2

1

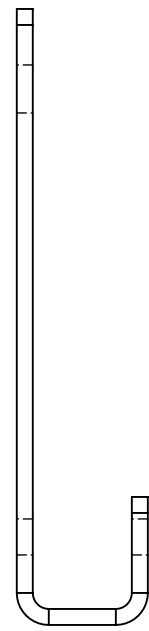
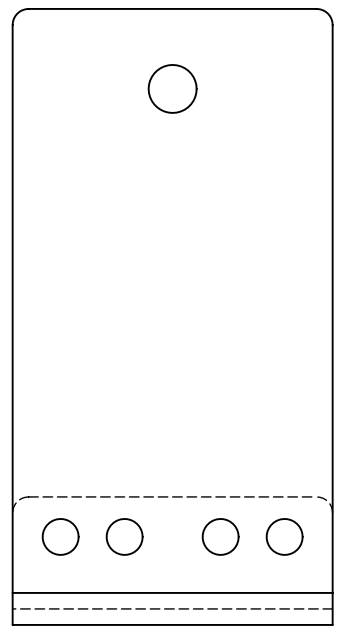
THE INFORMATION CONTAINED IN THIS DRAWING IS THE SOLE PROPERTY OF SOLAR TECHNOLOGY, INC. ANY REPRODUCTION IN PART OR WHOLE WITHOUT THE WRITTEN PERMISSION OF SOLAR TECHNOLOGY, INC. IS PROHIBITED.



ITEM N/A	USED IN: AM-25-925	Flap Swing Bar	1/8" Thick Aluminum	Qty Req'd: 2 ea. per AM-25-925
CAD FILE: SolidWorks\ArrowBoard\FlapKitDocumentation.SLDDWG				
UNLESS OTHERWISE SPECIFIED DIMENSIONS ARE IN INCHES TOLERANCES ARE:		CAD GENERATED DRAWING, DO NOT MANUALLY UPDATE		Solar Technology, Inc.
FRACTIONS DECIMALS ANGLES +/- 1/32" 0.0313" 1 deg.		APPROVALS	DATE	
MATERIAL 1/8" Thick Aluminum		DRAWN		P/N - 110-825-230
FINISH Standard		CHECKED		
DO NOT SCALE DRAWING		RESP ENG		REV. F
		MFG ENG		SCALE: N/A SHEET 5 OF 7 Effective Date: 000728
		QUAL ENG		

8 7 6 5 4 3 2 1

THE INFORMATION CONTAINED IN THIS DRAWING IS THE SOLE PROPERTY OF SOLAR TECHNOLOGY, INC. ANY REPRODUCTION IN PART OR WHOLE WITHOUT THE WRITTEN PERMISSION OF SOLAR TECHNOLOGY, INC. IS PROHIBITED.



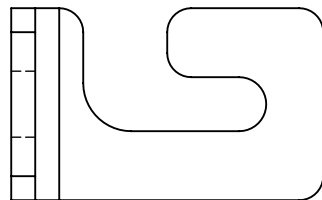
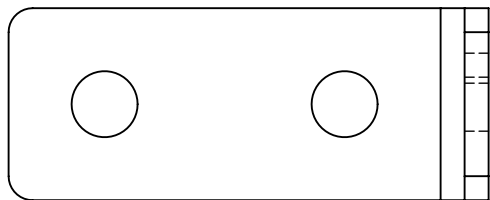
ITEM N/A	USED IN: AM-25-925	Flap Mounting Bracket	1/8" Thick Aluminum	Qty Req'd: 4 ea. per AM-25-925	
CAD FILE: SolidWorks\ArrowBoard\FlapKit\Documentation.SLDDWG					
UNLESS OTHERWISE SPECIFIED DIMENSIONS ARE IN INCHES TOLERANCES ARE:		CAD GENERATED DRAWING, DO NOT MANUALLY UPDATE		Solar Technology, Inc. Flap Mounting Bar P/N - 110-825-102 SIZE A DWG. NO. AM-25-935 REV. F	
FRACTIONS	DECIMALS	ANGLES	APPROVALS		DATE
+/- 1/32"	0.0313"	1 deg.	DRAWN		
MATERIAL	1/8" Thick Aluminum		CHECKED		
FINISH	Standard		RESP ENG		
DO NOT SCALE DRAWING		QUAL ENG	MFG ENG		
SCALE: N/A		SHEET 6 OF 7	Effective Date: 000728		

D
C
B
A

D
C
B
A

8 7 6 5 4 3 2 1

THE INFORMATION CONTAINED IN THIS DRAWING IS THE SOLE PROPERTY OF SOLAR TECHNOLOGY, INC. ANY REPRODUCTION IN PART OR WHOLE WITHOUT THE WRITTEN PERMISSION OF SOLAR TECHNOLOGY, INC. IS PROHIBITED.

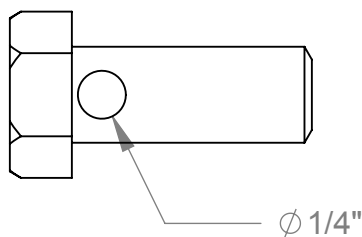


Flap Keeper (4 req'd)
110-825-240
1/8" Thick Aluminum



Spring Handle (2 req'd)
110-925-225
7/8" dia Music Wire
017-008-219

Retainer Bolt (2 req'd)
445-500-125



ITEM N/A	USED IN: AM-25-925	Keeper, Retainer Bolt, and Spring Handle	See Notes	Qty Req'd: See Notes	
CAD FILE: SolidWorks\ArrowBoard\FlapKitDocumentation.SLDDWG					
UNLESS OTHERWISE SPECIFIED DIMENSIONS ARE IN INCHES TOLERANCES ARE:		CAD GENERATED DRAWING, DO NOT MANUALLY UPDATE		Solar Technology, Inc. Keeper, Retainer Bolt, and Spring Handle P/N - 110-925-225 110-825-240	
FRACTIONS	DECIMALS	ANGLES	APPROVALS		DATE
+/- 1/32"	0.0313"	1 deg.	DRAWN		
MATERIAL			CHECKED		
FINISH			RESP ENG		
DO NOT SCALE DRAWING			MFG ENG		
			QUAL ENG		
SIZE A		DWG. NO. AM-25-935		REV. F	
SCALE: N/A		SHEET 7 OF 7		Effective Date: 000728	